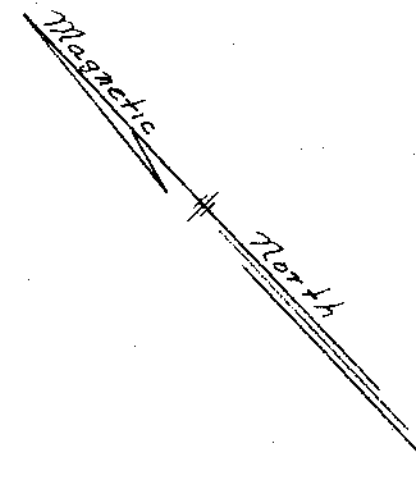


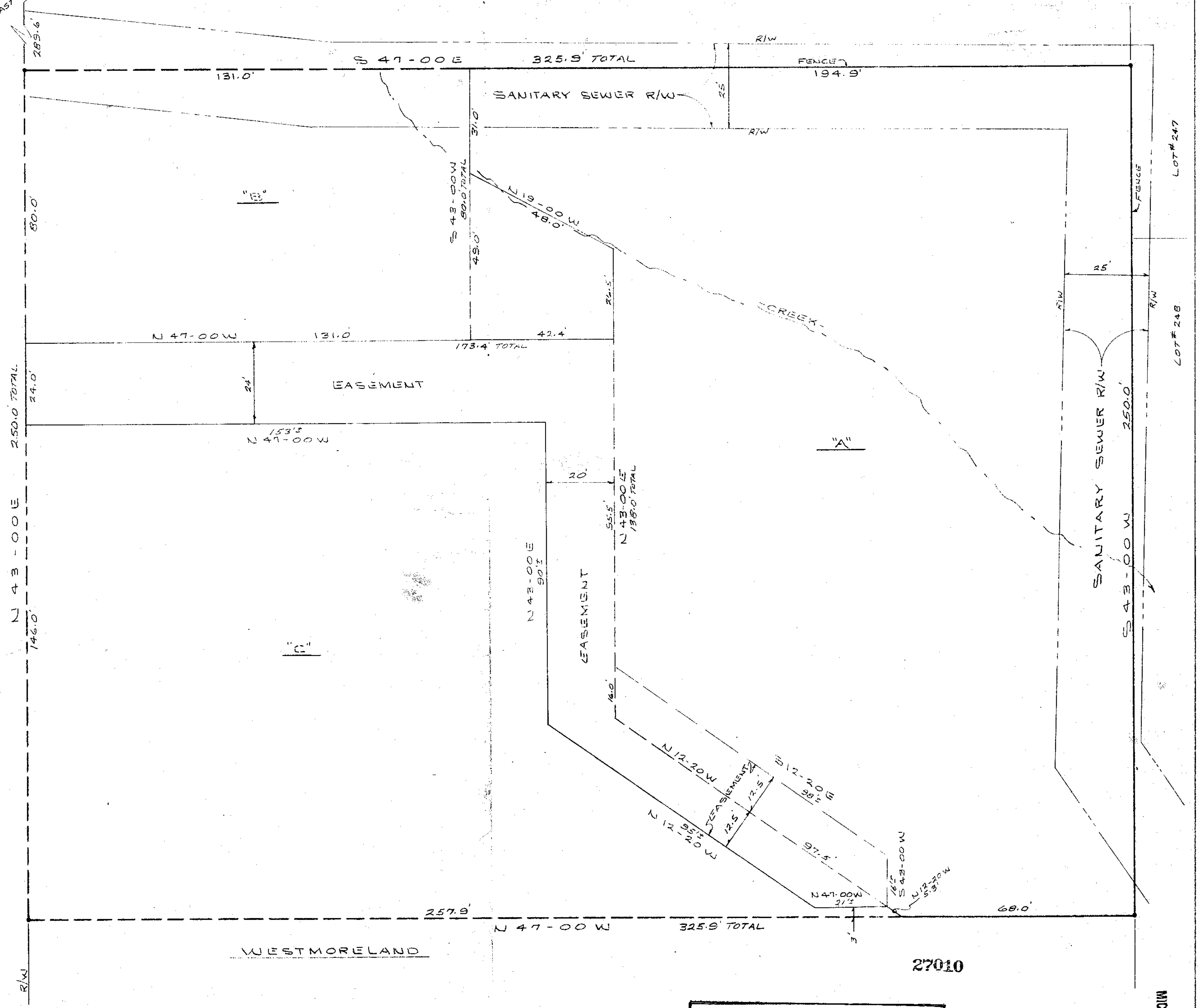
EAST LEE RD.
289.6

CATIMER



WADE HAMPTON BLVD. U.S. HWY. NO. 29

Henry Childs



PROPERTY OF
THE MIDDLETON GROUP
 GREENVILLE CO., S.C.
 SCALE 1"=20' APRIL 17, 1975

THIS PLAT IS NOT A SUBDIVISION AS DEFINED BY THE GREENVILLE COUNTY SUBDIVISION REGULATIONS
 5/5, 75 *J. Coleman*
 Chairman, Secretary, or Director of Planning.
 Greenville County Planning Commission

NOTE:
 INTERIOR LINES NOT SURVEYED

MAY 20 1975

5-J-32

PIEDMONT ENGINEERS ARCHITECTS PLANNERS
 GREENVILLE, S.C. Registered # 3616

27010

MICROFILMED

RECORDING FEE
 PAID 3.00